

DILEMMA

STAR TREK
THE NEXT GENERATION



NOT ENDORSED BY CBS OR PARAMOUNT PICTURES

3 EMERGENT LIFE-FORM

Following a magnoscopic storm, the U.S.S. Enterprise's systems began to develop a new intelligence. It took control of the ship and sought out verition particles for nutrients.

Place on ship. Now and start of each turn, opponent may move ship to another location (using its RANGE). If ship has Holodeck, cure with 2 ENGINEER and Astrophysics aboard.

311 VP

DILEMMA

STAR TREK
DEEP SPACE NINE



NOT ENDORSED BY CBS OR PARAMOUNT PICTURES

IN THE PALE MOONLIGHT

"A guilty conscience is a small price to pay for the safety of the Alpha Quadrant, so I will learn to live with it. Because I can live with it... Computer, erase that entire personal log."

To get past requires a personnel who has INTEGRITY <4
OR a Treachery personnel OR any Garak OR a Founder.

312 VP

INCIDENT

STAR TREK
ENTERPRISE



NOT ENDORSED BY CBS OR PARAMOUNT PICTURES

4 CAPTURED

Seeds or plays on table. During your turn, your non-crew or Away Team may capture one opposing personnel present (random selection) if you have more SECURITY present than opponent, or more hand weapons present than opponent. OR During any player's turn, you may capture one personnel just stunned in battle by your non-crew SECURITY. Discard incident after either use.

313 VP

INCIDENT

STAR TREK
VOYAGER



NOT ENDORSED BY CBS OR PARAMOUNT PICTURES

THE UNDISCOVERED COUNTRY

Seeds on table. While all your personnel in play are, you may draw an extra card at the end of your turn. Once per game, in place of your normal card play, you may nullify Homefront. Nullified if you have in play both Camp Khitomer and a headquarters.

314 VP

Two of Nine

STAR TREK
VOYAGER



NOT ENDORSED BY CBS OR PARAMOUNT PICTURES

IDENTIFICATION: TRANSTATOR DRONE
TASK: Primary adjunct of unimatrix zero one.
BIOLOGICAL DISTINCTIVENESS: Humanoid.

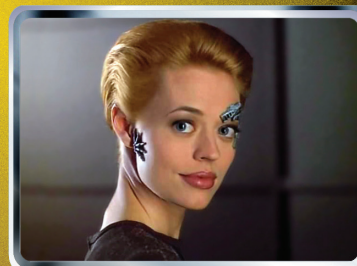
SCIENCE Physics SECURITY
Once each turn, may discard a card from hand to place bottom two cards of discard pile beneath draw deck.

INTEGRITY 5 CUNNING 5 STRENGTH 7

315 VP

Seven of Nine

STAR TREK
VOYAGER



NOT ENDORSED BY CBS OR PARAMOUNT PICTURES

ENGINEER

Borg freed from the Collective. Slowly reclaiming her human past and individuality, guided by Kathryn Janeway, The Doctor, and the U.S.S. Voyager crew.

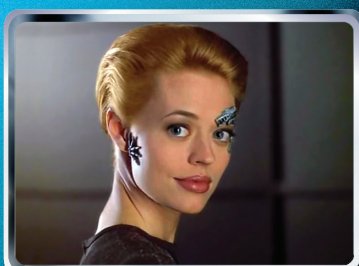
SCIENCE Stellar Cartography x2 Physics
Exobiology Computer Skill x2 Music

INTEGRITY 7 CUNNING 9 STRENGTH 9

316 VP

Seven of Nine

STAR TREK
VOYAGER



NOT ENDORSED BY CBS OR PARAMOUNT PICTURES

ENGINEER

Borg freed from the Collective. Slowly reclaiming her human past and individuality, guided by Kathryn Janeway, The Doctor, and the U.S.S. Voyager crew.

SCIENCE Stellar Cartography x2 Physics
Exobiology Computer Skill x2 Music

INTEGRITY 7 CUNNING 9 STRENGTH 9

316 VP

U.S.S. Pasteur

STAR TREK
THE NEXT GENERATION



NOT ENDORSED BY CBS OR PARAMOUNT PICTURES

OLYMPIC CLASS

Medical relief vessel. Starfleet registry NCC-58928. Captained by Beverly Picard in an alternate future.

Holodeck, Tractor Beam, MEDICAL
If your Future Enterprise in play, it has a icon and reduces its staffing by one icon.

RANGE 13 WEAPONS 6 SHIELDS 7

317 VP

I.K.S. Chang

STAR TREK
THE NEXT GENERATION



NOT ENDORSED BY CBS OR PARAMOUNT PICTURES

VOODIEN CLASS

Patrolled the Devron system with sister ship I.K.S. Fek'le'hr. Formerly commanded by Governor Worf.

Cloaking Device, Holodeck, Tractor Beam
If your I.K.S. Fek'le'hr in play, it has a icon and both ships reduce staffing by one icon.

RANGE 10 WEAPONS 9 SHIELDS 9

318 VP